

Flood Damage Hazard Map

How to Read Hazard Map

Front Side	Back Side
------------	-----------

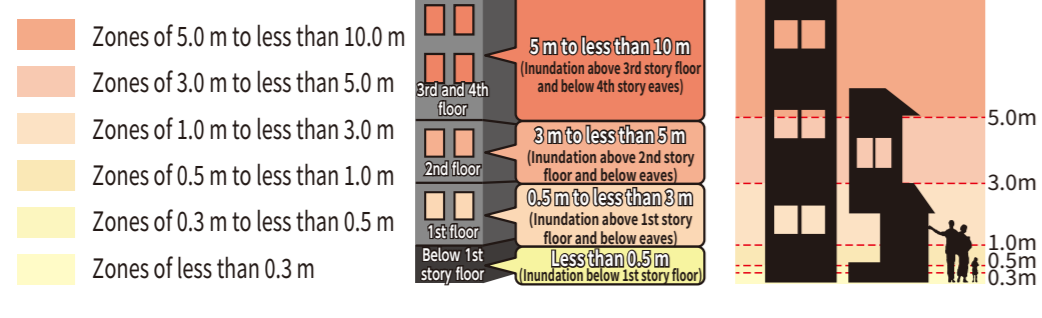
Map Superimposing All Flood Damage Risks
This map shows the worst-case scenario for the maximum expected scale of rain (heavy rainfall estimated to occur once every 1,000 years), when "river water inundation" due to flooding of level 1 and level 2 rivers occurs at the same time as "inland water inundation" due to waterways and sewage being unable to drain completely.

Hazard Map by Type of Flood Risk
The Potential Inundation Area Map and Flood Prediction Map for river water inundation created by Aichi Prefecture, and the Flood Outlook Area Map for inland water inundation created by Kariya City are shown separately and these maps show the predictions for listed rainfall.

Please check these flood hazard maps and confirm how much flooding is anticipated in the area of your residence, where the designated evacuation shelters are, and whether there are any dangerous places between your home and your designated evacuation shelter. If heavy rainfall equivalent to the amount of rainfall estimated in the flood hazard map is predicted, be conscious of the risk of flooding and make sure you are prepared to evacuate at any time. Furthermore, data for amplified maps for the areas around each elementary school is available on the Kariya City website, so make sure you check these maps as well.

*When the flood depth of the two maps on the back of the page are superimposed, they show the inundation height of the map on the front side.

Flood Depth Guide

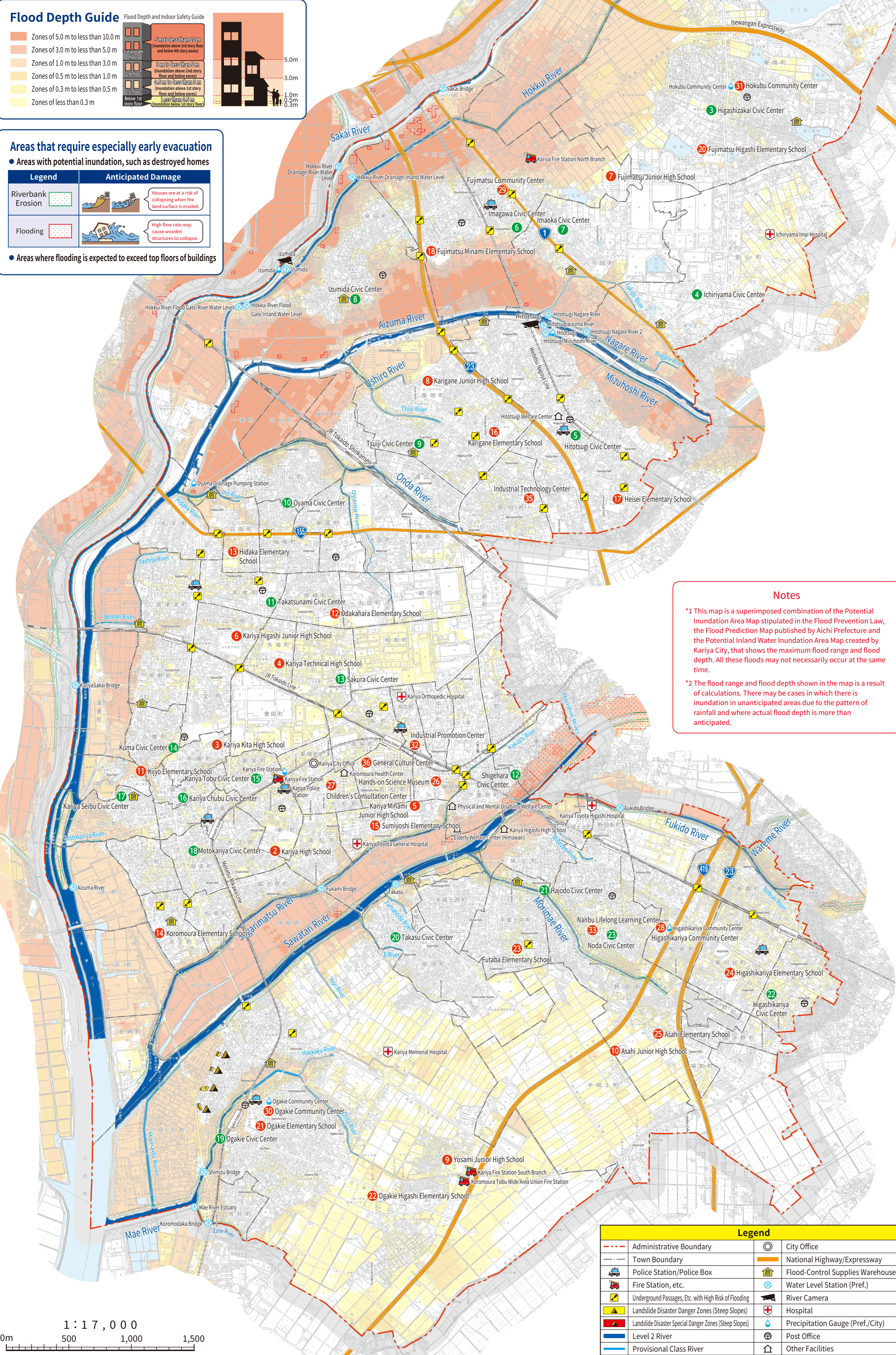


Areas that require especially early evacuation

• Areas with potential inundation, such as destroyed homes

Legend	Anticipated Damage
Riverbank Erosion	Houses are at a risk of collapsing when the land surface is eroded.
Flooding	High flow rate may cause wooden structures to collapse.

• Areas where flooding is expected to exceed top floors of buildings



Designated Evacuation Shelter

No.	Facility Name	Location	Phone Number	Elevation
1	Aichi University of Education	1 Hiroasawa, Igaya-cho	26-2111	25.0m
2	Kariya High School	5-101 Kotobuki-cho	21-3171	9.4m
3	Kariya Kita High School	1-67 Terayoko-cho	21-5107	8.8m
4	Kariya Technical High School	2-210 Yaba-cho	21-2227	9.1m
5	Kariya Minami Junior High School	2-1 Sumiyoshi-cho	21-0025	9.8m
6	Kariya Higashi Junior High School	1-201 Yamaike-cho	21-0533	9.1m
7	Fujimatsu Junior High School	114 Hanaoka, Imagawa-cho	36-0402	9.3m
8	Karigane Junior High School	3-9-1 Tsujii-cho	24-1038	8.9m
9	Yosami Junior High School	5-1 Kamizawari, Ogakie-cho	21-0487	10.2m
10	Asahi Junior High School	152 Jindoike, Noda-cho	23-9282	13.7m
11	Kijyo Elementary School	1-25-1 Shiro-cho	21-0225	2.6m
12	Odakara Elementary School	1-101 Harasaki-cho	21-0325	9.8m
13	Hidaka Elementary School	1-201 Hidaka-cho	23-2468	6.3m
14	Koromoura Elementary School	3-27 Tenno-cho	21-0326	8.0m
15	Sumiyoshi Elementary School	3-70 Sumiyoshi-cho	21-5831	10.3m
16	Karigane Elementary School	2-15-1 Tsujii-cho	22-2414	10.4m
17	Heisei Elementary School	3-18-1 Hitotsugi-cho	27-1381	12.7m
18	Fujimatsu Minami Elementary School	1 Yamawaki, Imagawa-cho	36-0404	8.0m
19	Fujimatsu Kita Elementary School	10-5 Yaketa, Higashizakai-cho	36-5414	21.1m
20	Fujimatsu Higashi Elementary School	71 Horike, Higashizakai-cho	36-2818	15.8m
21	Ogakie Elementary School	1-1 Nishioji, Ogakie-cho	21-1080	8.2m
22	Ogakie Higashi Elementary School	36 Shirasawa, Ogakie-cho	24-2718	8.6m
23	Putaba Elementary School	3-12-2 Hajodonakamachi	21-0437	10.8m
24	Higashikariya Elementary School	3-8 Higashikariya-cho	23-9512	14.7m
25	Asahi Elementary School	151 Jindoike, Noda-cho	22-4191	13.8m
26	Hands-on Science Museum	1-39-3 Kanda-cho	24-0311	6.3m
27	Children's Consultation Center	1-51 Otemachi	62-6313	10.3m
28	Asahi Elementary School	2-16-1 Shiohi-cho	24-1175	12.5m
29	Fujimatsu Community Center	2-152 Imagawa-cho	36-1111	9.9m
30	Ogakie Community Center	45-1 Komichi, Ogakie-cho	24-3751	8.4m
31	Hokubu Community Center	78-2 Sumiyoshi, Higashizakai-cho	36-7171	15.7m
32	Industrial Promotion Center	1-1-6 Aoi-cho	28-0555	10.3m
33	Nanbu Lifelong Learning Center	78-2 Nishida, Noda-cho	62-8555	10.7m
34	Hokubu Lifelong Learning Center	6-26 Matsugasaki, Igaya-cho	36-0112	30.4m
35	Industrial Technology Center	1-157-1 Onda-cho	24-1841	11.7m
36	General Culture Center (for stranded persons)	2-104 Wakamatsu-cho	21-7430	9.8m

*Designated Evacuation Shelters marked with * allow pet evacuation in case of a massive disaster. (Pets will be kept in outdoor bicycle parking lots)

Notes

- *1 This map is a superimposed combination of the Potential Inundation Area Map stipulated in the Flood Prevention Law, the Flood Prediction Map published by Aichi Prefecture and the Potential Inland Water Inundation Area Map created by Kariya City, that shows the maximum flood range and flood depth. All these floods may not necessarily occur at the same time.
- *2 The flood range and flood depth shown in the map is a result of calculations. There may be cases in which there is inundation in unanticipated areas due to the pattern of rainfall and where actual flood depth is more than anticipated.

Facility Available for Evacuation

Civic centers that are available for evacuation are opened by voluntary disaster countermeasure councils in each area in cases of large-scale disaster or when designated evacuation shelters cannot accommodate the evacuees. When evacuating, please first go to the designated evacuation shelter nearest to your home.

No.	Facility Name	Location	Phone Number	Elevation
1	Igaya Civic Center	46 Sakurajima, Igaya-cho	36-8511	15.0m
2	Nishizakai Civic Center	2 Ikeshita, Nishizakai-cho	—	9.0m
3	Higashizakai Civic Center	16 Noborizaka, Higashizakai-cho	35-4500	11.7m
4	Ichiryama Civic Center	61-1 Kanayama, Ichiryama-cho	35-2960	14.3m
5	Hitotsugi Civic Center	4-37-3 Hitotsugi-cho	23-1234	12.3m
6	Imagawa Civic Center	1-402-2 Imagawa-cho	36-2203	10.6m
7	Imaoka Civic Center	68 Miyaoka, Imaoka-cho	36-7175	13.4m
8	Izumida Civic Center	88-5 Gogatsuorido, Izumida-cho	23-9943	5.0m
9	Tsujii Civic Center	5-22-3 Tsujii-cho	24-3490	10.0m
10	Oyama Civic Center	1-810 Oyama-cho	23-4113	8.4m
11	Takatsunami Civic Center	1-412 Takakura-cho	23-9391	9.1m
12	Shigehara Civic Center	1-67 Shigeharatomachi	27-3387	10.7m
13	Sakura Civic Center	2-30 Shimmei-cho	23-1298	10.6m
14	Kuma Civic Center	7-75 Hachimam-cho	24-6588	4.2m
15	Kariya Tobu Civic Center	3-36-1 Shinsakae-cho	23-9138	10.1m
16	Kariya Chubu Civic Center	4-117-3 Ginza	23-9411	9.3m
17	Kariya Seibu Civic Center	3-64 Tsukasa-cho	22-0206	4.0m
18	Motokariya Civic Center	4-15-1 Miyuki-cho	23-2403	10.3m
19	Ogakie Civic Center	25-14 Shimizu, Ogakie-cho	24-5707	3.1m
20	Takasu Civic Center	5-1 Tatsumi, Takasu-cho	23-0717	9.6m
21	Hajodo Civic Center	1-10-6 Hajodonakamachi	25-2348	5.5m
22	Higashikariya Civic Center	3-2-2 Suehiro-cho	21-7980	14.8m
23	Noda Civic Center	40-1 Morimae, Noda-cho	45-7538	11.8m

*The aforementioned designated evacuation shelters and facilities available for evacuation may be flooded in some cases. Be sure to pay attention to information when evacuating and prepare for evacuation in advance.

Hospital

Facility Name	Location	Phone Number
Kariya Toyota General Hospital	5-15 Sumiyoshi-cho	21-2450
Tsujimura Surgical Hospital	20-1 Sakurajima, Igaya-cho	36-5200
Kariya Orthopedic Hospital	3-6 Aoi-cho	23-1555
Kariya Toyota Higashi Hospital	1-101 Nodashinmachi	62-5111
Kariya Memorial Hospital	112 Ushibasama, Ogakie-cho	21-0123
Ichiryama Imai Hospital	88 Nakahonzan, Ichiryama-cho	26-6700

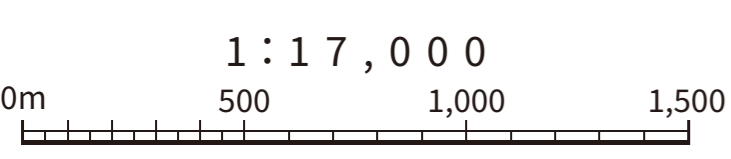
Government and Public Offices

Facility Name	Location	Phone Number
Kariya City Office	1-1 Toyo-cho	23-1111
Elderly Welfare Center (Himawari)	3-120 Shimoshigehara-cho	23-0555
Physical and Mental Disability Welfare Center	3-32 Shimoshigehara-cho	24-6066
Hitotsugi Welfare Center	4-40-3 Hitotsugi-cho	25-2021
Koromoura Tobu Wide Area Union Fire Station	204-1 Nishitakane, Ogakie-cho	63-0119
Kariya Fire Station	1-201-1 Kotobuki-cho	23-1119
Kariya Fire Station North Branch	69-2 Nabeta, Imagawa-cho	36-1119
Kariya Fire Station South Branch	203 Nishitakane, Ogakie-cho	29-1119
Kariya Police Station	1-302 Kotobuki-cho	22-0110
Kariya Higashi High School	20 Mitsumata, Hajodo-cho	21-3347
Koromoura Health Center	1-12 Otemachi	21-4778

*Kariya Higashi High School will not be open as a designated evacuation shelter in case of flood.

Inquiries

Kariya City Office, Community Safety Department, Crisis-Management Division
 ☎ 448-8051 1-1 Toyo-cho, Kariya City, Aichi Prefecture
 ☎ 0566-62-1190 (Direct Line)
 ✉ kkanri@city.kariya.lg.jp | https://www.city.kariya.lg.jp



Legend	
--- Administrative Boundary	City Office
--- Town Boundary	National Highway/Expressway
Police Station/Police Box	Flood-Control Supplies Warehouse
Fire Station, etc.	Water Level Station (Pref.)
Underground Passages, Etc. with High Risk of Flooding	River Camera
Landslide Disaster Danger Zones (Steep Slopes)	Hospital
Landslide Disaster Special Danger Zones (Steep Slopes)	Precipitation Gauge (Pref./City)
Level 2 River	Post Office
Provisional Class River	Other Facilities